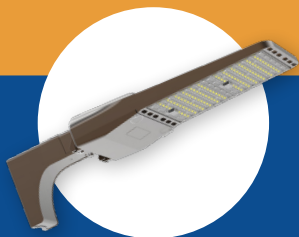


GAMEDAY
LIGHTING



Joe Series

EXTERIOR COURT LIGHT FIXTURE



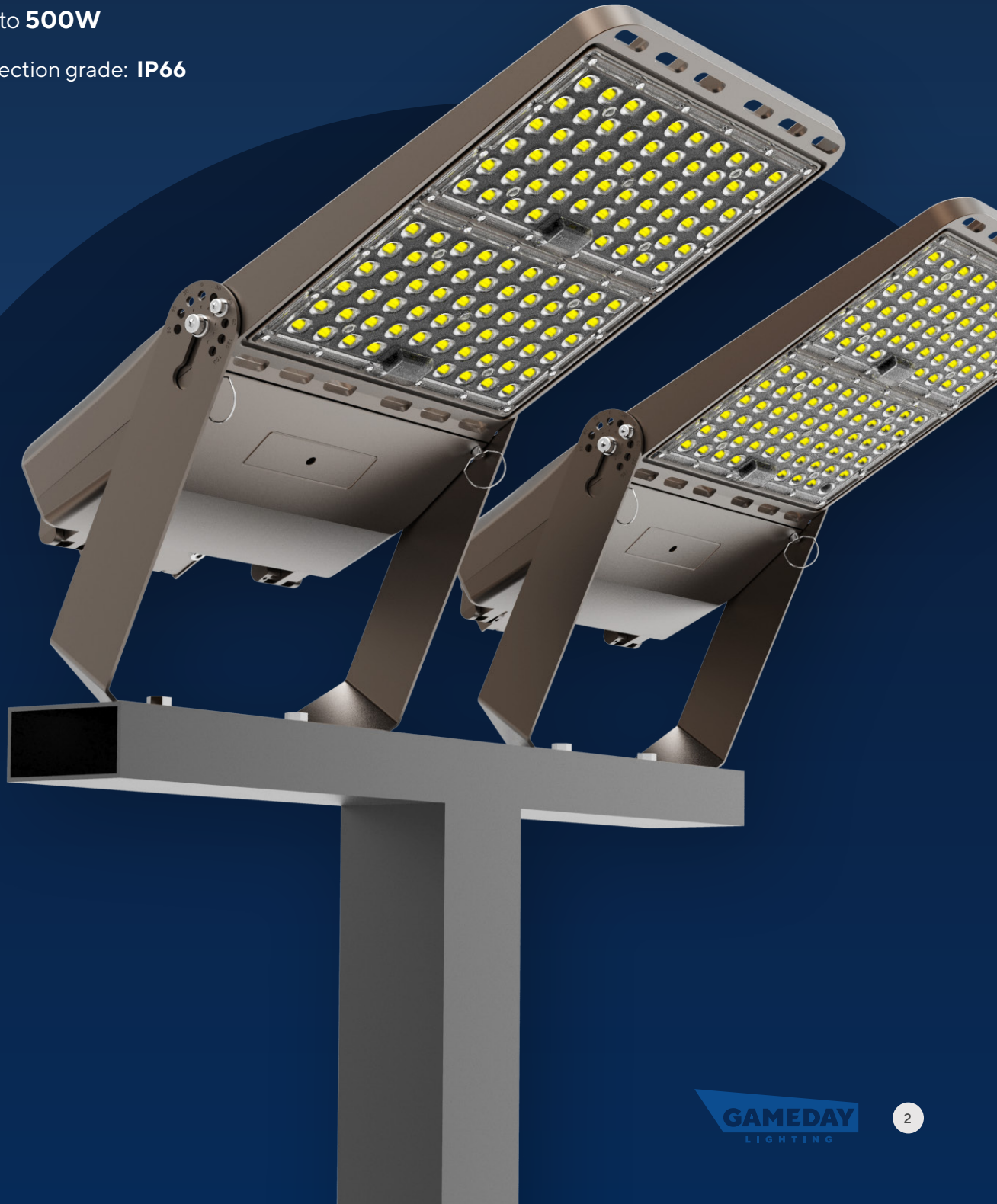
Ideal Lighting for Tennis & Pickleball

140lm /W and optional 160lm/W • Up to 500W

POWERFUL & VERSATILE

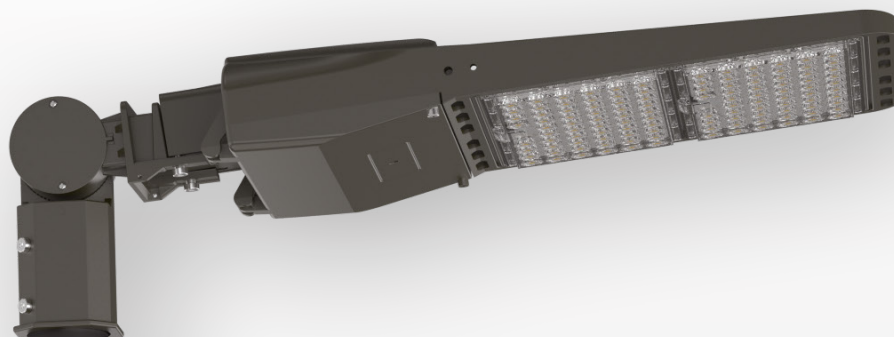
With a beautiful slimline design along with one of the highest lumen performance ratings on the market, **JOE SERIES** fixtures can be used as flood lights or area lights.

- Luminous efficacy: Up to **140lm /W** and **160lm/W** (optional)
- Color Rendering Index (CRI): **Ra70**
- Power: Up to **500W**
- Fixture protection grade: **IP66**



ONE OF THE MOST ADVANCED LEDS ON THE MARKET

The **JOE SERIES** has a multitude of mounting options, surge protection devices, and IOT photocell capabilities.



Bi-level sensor control

Option to add occupancy sensor.

Proprietary optical control

Engineered for maximum light output, our specially designed lens type allows architects maximum freedom to design any layout without restraint.

Photocontrol to save energy

Optional photocontrol boosts energy savings.

PC lens that's easy to replace

Modular and uniform design in large, medium and small sizes.

Aerodynamic pole mount

Complements the fixture's aerodynamic shape and reduces the fixture's drag in harsh environments.

Integrated heatsink for thermal dissipation

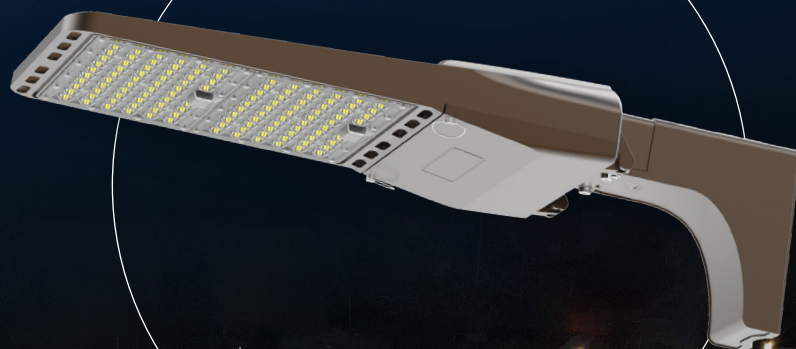
Integrated cooling fin allows the fixture to have extremely long lifetime hours.

Hinge access—to save time and money

Designed with the installer in mind, the door frame has a simple-to-use hinge access that allows the installer to be hands-free when entering the electrical compartment.

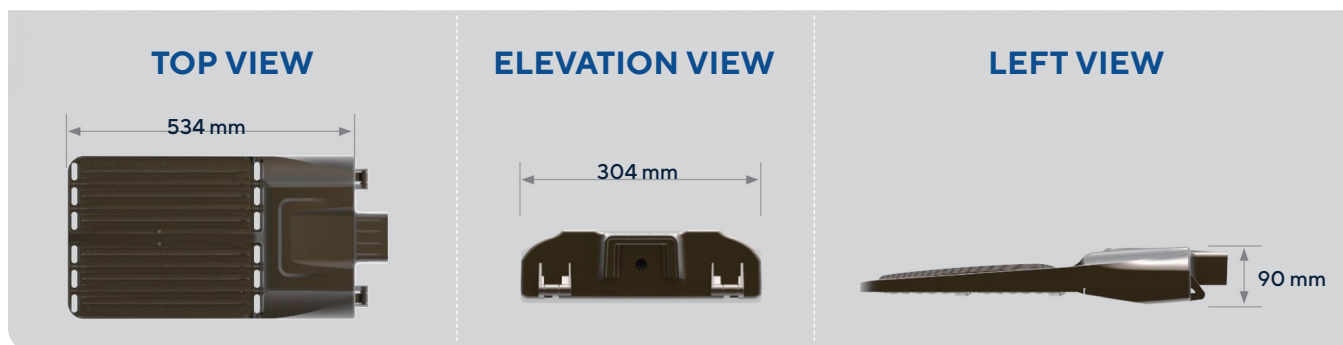
CONQUERING THE LIGHTING LANDSCAPE

This slick and modern luminaire has been designed to handle any environment.



PARAMETERS & DIMENSIONS

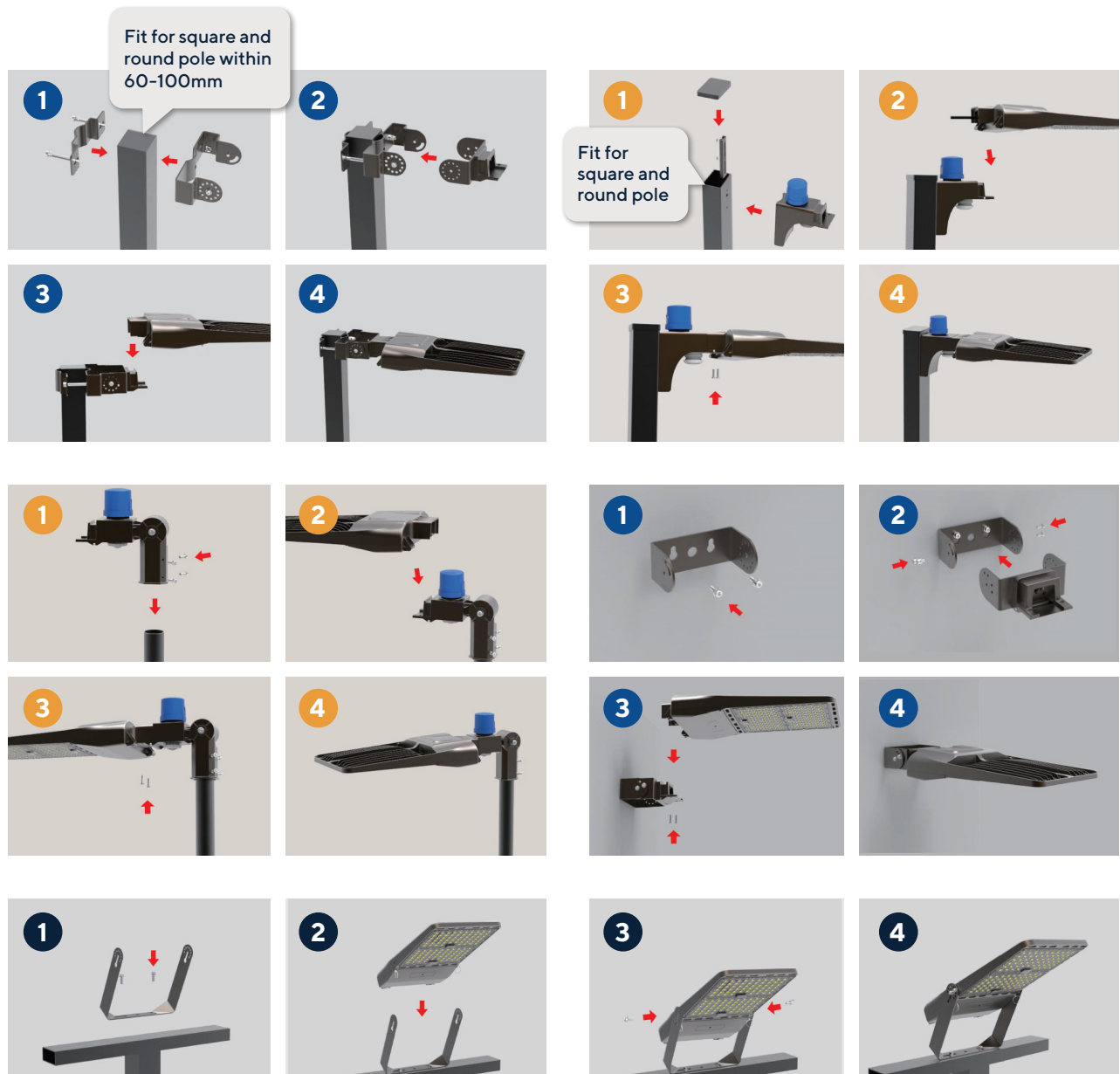
Model	AFL02-80	AFL02-100	AFL02-150	AFL02-185	AFL02-240	AFL02-300	AFL02-400	AFL02-500
Lumen Output	11,200lm	14,000lm	21,000lm	25,160lm	28,800lm	41,400lm	56,000lm	68,000lm
CCT	3000K, 4000K, 5000K, 5700K, 6500K							
CRI	>70Ra							
EPA	0.23ft²				0.42ft²		0.576ft²	
Light Source	Lumileds							
System Watts	80W	100W	150W	185W	240W	300W	400W	500W
Dimensions (mm)	428 × 304 × 88 mm				595 ×304 × 92 mm		768 × 340 × 105 mm	
Input Voltage	100-277V / 240-480V							
Power Factor	0.95							
THD	<15%							
Surge Protection	10KV Current Surge Optional							
Driver	Meanwell/ SOSEN / Inventronics							
Operating Temp Range	-40° C to +50° C							
IP Rating	IP66							
Dimming Control (Optional)	1-10V.DMX.DALI Optional							
Life Span	L80, >50000h							
Light Distributor Options	Type2-M, Type3-S, Type3-M, Type4-M, Type5-M, 90° × 120° , 30°, 60°, 130° × 60°, 135° × 80°							
Certification	CE, UL, CB, ENEC, SAA							



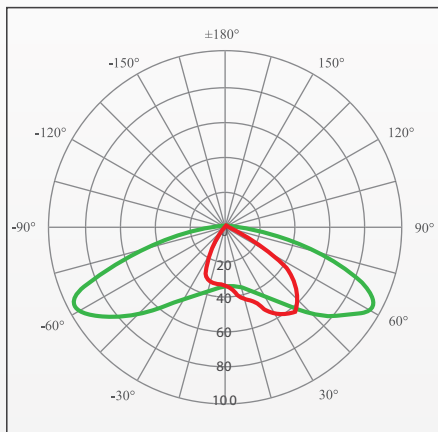
Due to the constant improvements in product development, individual parameters might change. Please refer to our sales or R&D team for most up-to-date content as specifications are subject to change without notice.

OPTIONAL INSTALLATION

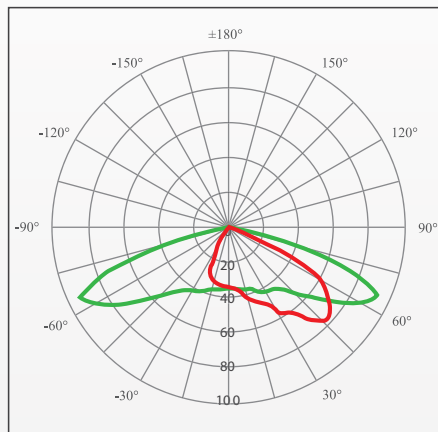
The lighting module is installed on the bracket and, when compared to existing technology, has advantages of safety and reliability—and does not fall off. When the LED area light lamp is installed in an illuminated module, the fastening bolt (fastening connector) at both ends of the lighting module can play the role of self-locking and push, and can ensure that the lighting module is not slipped from the support. The limitation of the general bracket opening can be solved, and the specific use occasions of the LED area light lamp can be effectively extended.



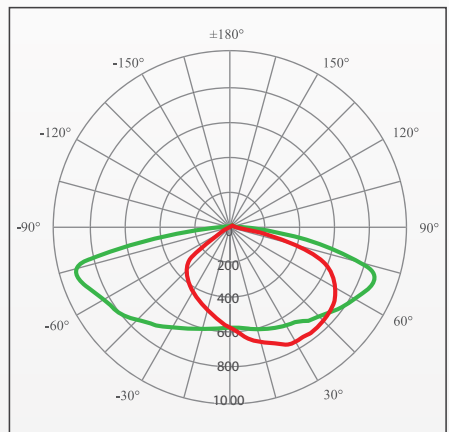
PHOTOMETRIC DIAGRAMS



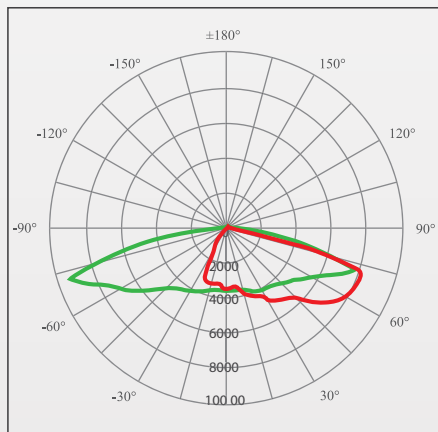
Type 2-M



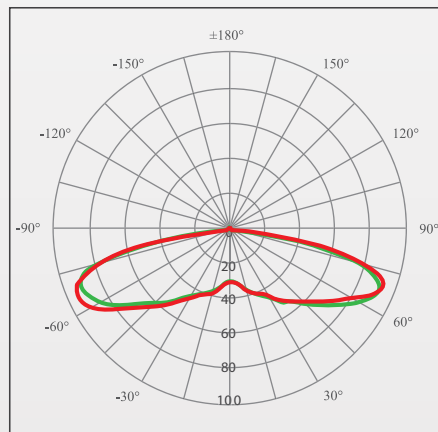
Type 3-S



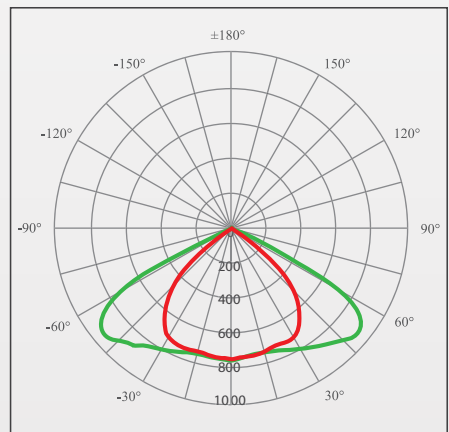
Type 3-M



Type 4-M



Type 5-S



90 x 120

EFFECTIVE PROJECTED AREA

0.55	●■ 1	8.50
1.10	■→■ 2@180	17.00
0.95	■↑■ 2@90	17.00
1.50	■↑■ 3@90	25.50
1.74	■↑■ 3@120	25.50
1.74	■↑■ 4@90	34.00

Due to the constant improvements in product development, individual parameters might change. Please refer to our sales or R&D team for most up-to-date content as specifications are subject to change without notice.

ORDER BY PART NUMBER

Use this table to define your Joe Series fixture part number

Q	K	CRI	V	Color	Optics	Options
80	30	70	NV-120-277	GR-grey	T4	PC-Photocell
100	40	80	HV-277-480	BL-black	T5	YK-Yoke Mount
150	50	90		WH-white	90x120	DM-Direct Mount
185	57			C-custom		SF-Slipfit Mount
240						AGG-Anti-Glare Grill
300						
400						
500						

How it works

Fill in the blanks below using the information from the table above:

Joe - Q_____ - ____K - ____CRI - _____ - _____ - _____

Part Number Example: Joe Series fixture that is 500w, 5000k, 80cri, 480v, white, T4 optics with photocell, yoke mount, and anti-glare grill:

Joe-Q**500-50K-80CRI-HV-WH-T4-PC-YK-AGG**

Visit us at **gamedaylighting.com**

Lighting for All Sports

CALL OR TEXT US TODAY

- 913.444.6195
- sales@gamedaylighting.com

