

**GAMEDAY**  
LIGHTING



# Bryant Series



**TOP PERFORMING LED SPORTS LIGHT**

Up to 2000 W MHL Replacement  
Power: 500W-1800W



# DESIGNED FOR SPORTS FACILITIES

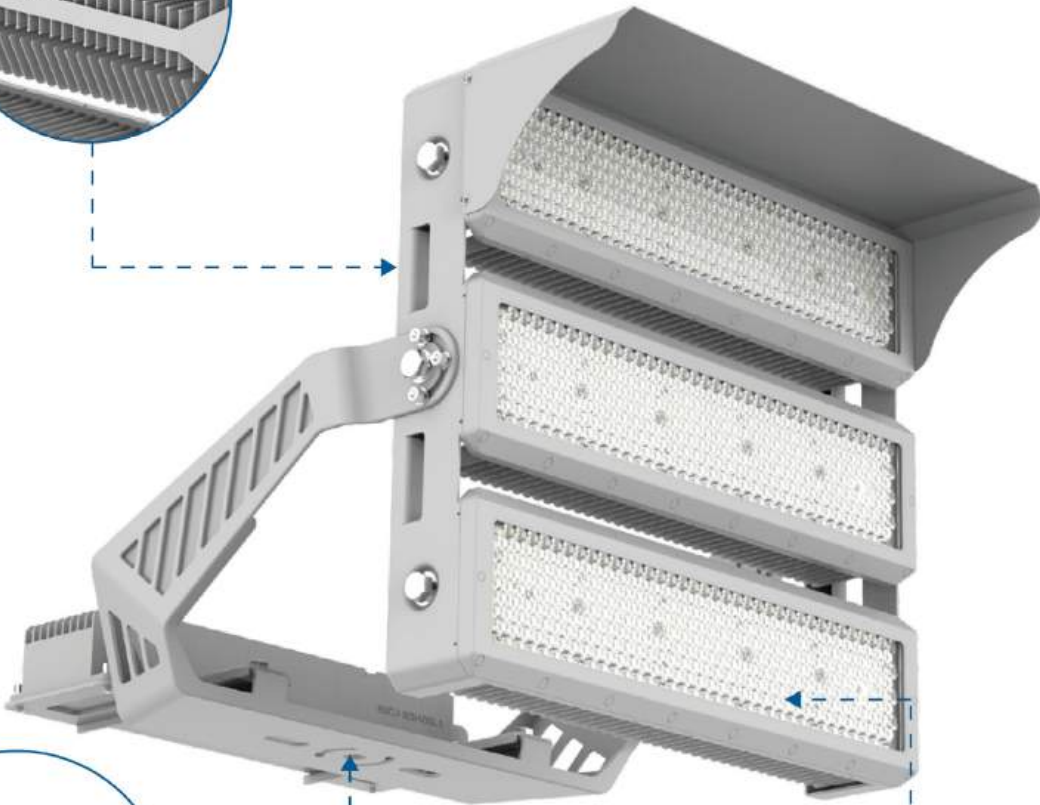
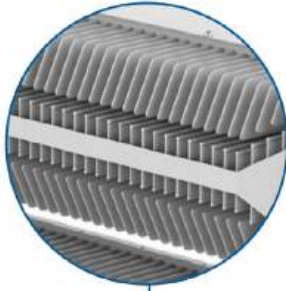
## BRYANT SERIES

- Minimizing windage of front and side surfaces through combined frame and modules.
- Low total weight of complete system, same size with traditional 2000W Metal halide/HPS.
- Easy to install and maintain, flexible mounting system, especially the new IP66 driver box and luminaire, also the modules.
- Minimizing TCO by maximum and constant light output with effective thermal management to extend product lifetime and minimize maintenance costs.
- LED uses standardized IES LM-p80-08 and TM-21-11 methods for collecting long-term data and extrapolating LED lumen maintenance.
- A|1070 pure aluminum body, seamless link of aerometal materials and numerous vents on heat sink improved heat management, keeps away from all field heat, ensures the stability of the light system.
- Salt-spray-testing level 1000hours/2000hours/3000hours for your special project requirements.
- Equipped with 10KV/20KV SPD, resist huge grid surge.

# BRYANT SERIES

## CUTTING EDGE HEATSINK

With aviation 1070 aluminum and cold-forged technology, it enormously increases the heat dissipation effect, reduces lamp weight and windage.

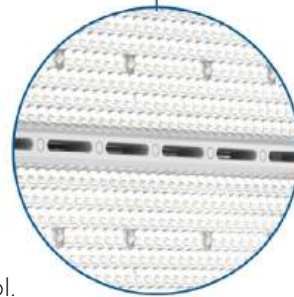


## DURABLE BRACKET

Passing 3G test and  
2000 hrs salt spray test.

## CONTROL UNWANTED LIGHT

Unequaled TIR lens  
with painted visor offers  
excellent spill light control.



Stadiums



Recreational  
Sports



Multi-sports  
Halls



Swimming  
Pools



Transportation  
& Industrial  
Areas



Facades



Light Shows

# SPECIFICATIONS



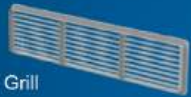
## OPTIONAL ACCESSORIES



Adjustable Visor



Visor



Grill



Glass



Rotatable Laser Pointer



Knuckle assembly bracket

500W 600W 750W

750W 1000W  
1200W 1500W

1500W 1800W

	500W=70,000LM 600W=84,000LM 750W=112,500LM	750W=112,500LM 900W=126,000LM 1000W=140,000LM	1200W=168,000LM 1500W=195,000LM	1500W=210,000LM 1800W=252,000LM
	Up to 140Lm/W			
	5700K / 5000K / 4000K			
<b>CRI</b>	70 / 80 / 90			
<b>TLCI</b>	Up to 90+			
	IP66			
	-104°F~122°F / -40°C ~ 50°C			
	IK10			
	Ball proof			
	Line - Line 20kV, Line - FG 20kV			
	15.8kgs (40.78lbs)Driver On fixture 13 kgs (28.66lbs)Remote driver	19.5kgs (43 lbs) Remote driver box	33.08Kg(72.75lbs) Remote driver box	
	Resistant to sea side and swimming pool environment			
	Up to 100 000 h			
	12° / 25° / 50° / 20°-40°-P10 / 25°x105° / NB / MB / WB (design according project requirement)			
	Front EPA=0.14m <sup>2</sup> (1.55ft <sup>2</sup> )	Front EPA=0.288m <sup>2</sup> (3.1ft <sup>2</sup> )	Front EPA=0.342m <sup>2</sup> (3.68ft <sup>2</sup> )	
	Textured different RAL on request			
	0-10V/ DALI/WIFI/DALI/Zigbee/DMX			





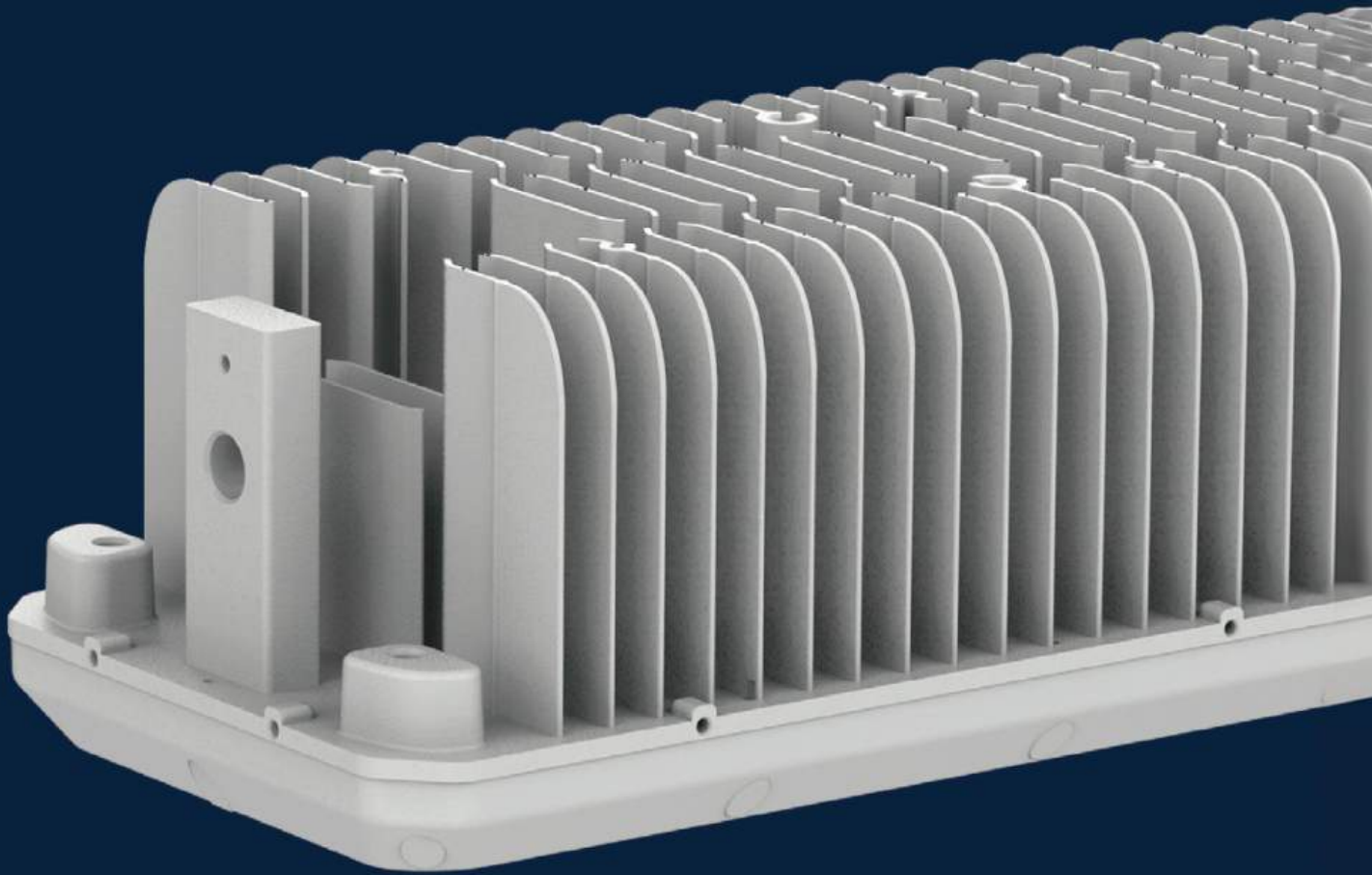
## MORE THAN EXPECTED

Patented LED module cold-forged aluminum design creates a higher impact strength and higher structural integrity with a superior heat dissipation capability.

The LED driver is made by Inventronics and rated for a life cycle of 76,000 hours. The high-uniformity, low glare, and low light spill-out that our product brings to the project are just some of the options paired with the maximum energy savings. The whole fixture is coated with a high quality anti-corrosive material that has a long-lasting lifespan that can withstand salt and other harsh environments.

# AVIATION ALUMINUM

- Aircraft Grade Aluminum
- High resistance to corrosion and finish
- High resistance to UV damage
- Excellent fatigue resistance
- Extra strength



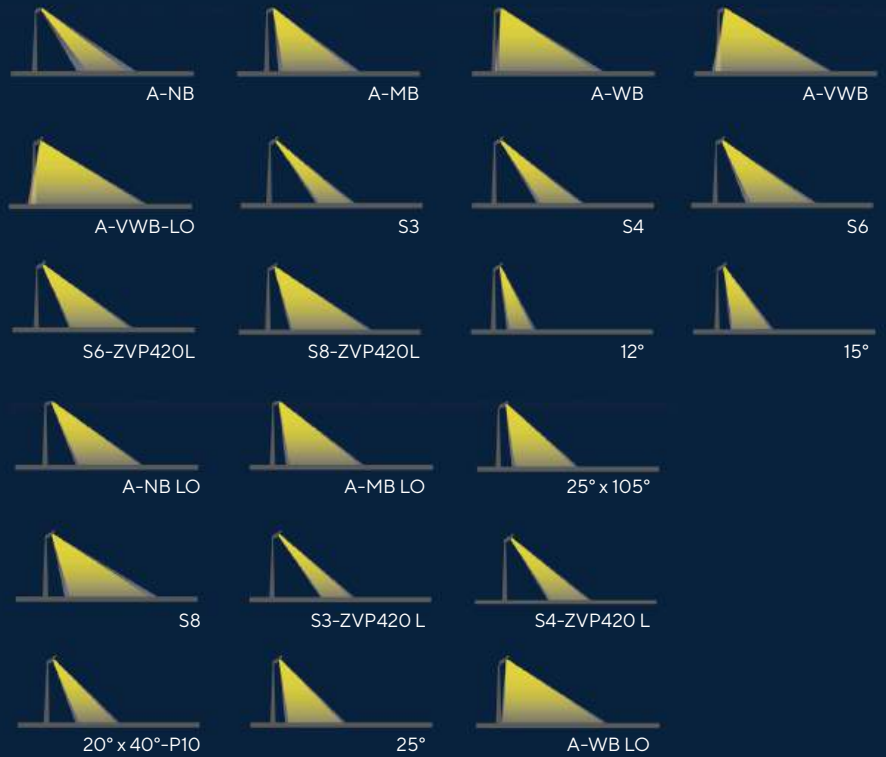


# BRYANT SERIES

## FOR PROFESSIONAL & RECREATIONAL SPORTS

Gameday Lighting is dedicated to providing the most optimized beam angles for different projects.

The high performance of the Bryant Series optical lens ensures a well-lit area for all levels of sports lighting. We can provide excellent light spill control, limit glare, and have no uplight.

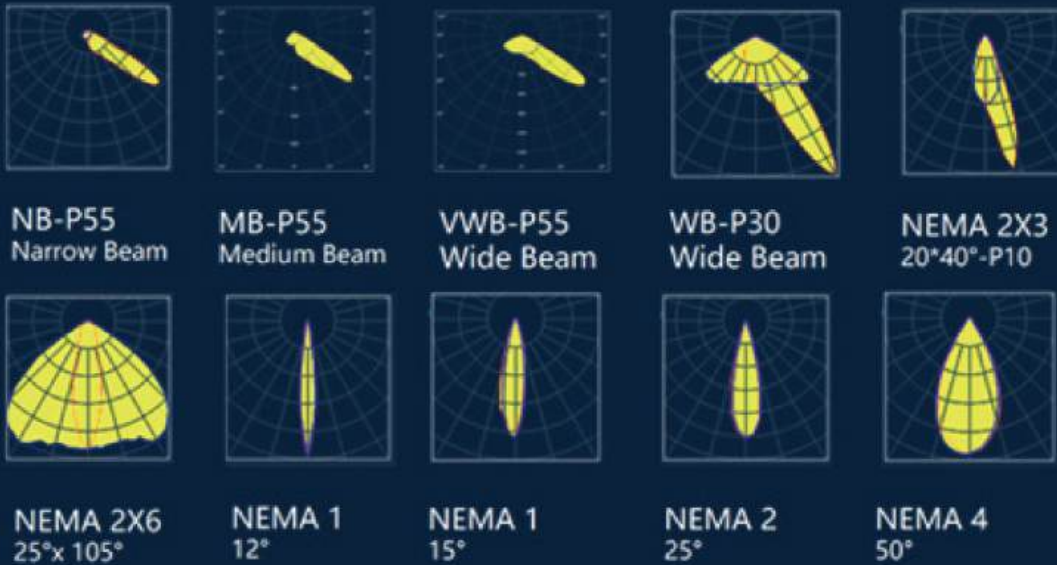


# OPTICS DESIGNED FOR SPORTS FACILITIES

TLCI>90, Broadcast Ready for >1000fps, HD|4K|8K, enable TV broadcasters for film super-slow-motion replays with a flicker factor <1%. Engineered by adopting seamless link of advanced free-form optics.

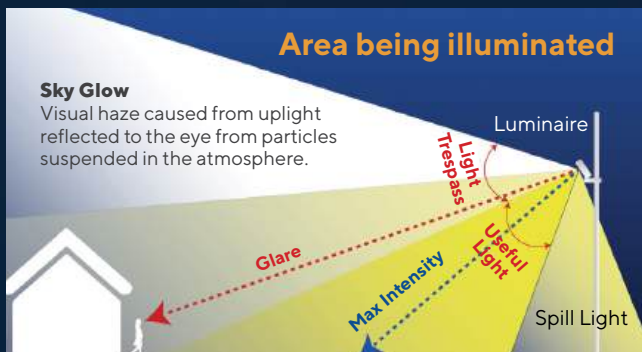
- Optics designed with unique “multi scales lenses” to make uniform light distribution and glare-reducing.
- High transmittance PC cover, anti-UV, IK10 protective grade, prevent LED chips vulcanization and dust accumulation on the lens.
- Symmetrical and asymmetrical light distribution enhancing uniformity of vertical and horizontal, meanwhile reducing light spill, especially back pole light in residential areas.

## NEMA DISTRIBUTION



- **DARK SKY FRIENDLY WITH ZERO UPWARD LIGHT**
- **SUPERIOR OPTICS FOR SPILL LIGHT CONTROL**

Bryant Series are built upon non-polluting LED technology, delivering light to sports arenas, fields and creative projects ONLY where the light is supposed to be, and remove disturbing light pollution to neighbors and surroundings.







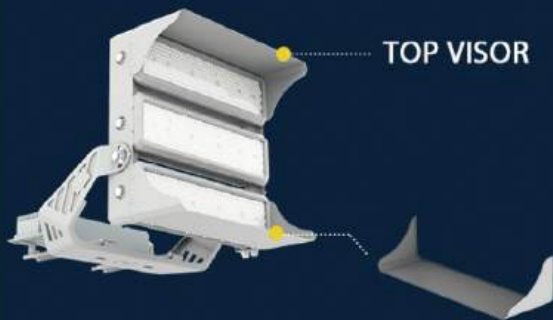
## SPILL LIGHT

### PREMIUM OPTICAL

### BOTTOM VISOR

GameDay Lighting is dedicated to providing custom solutions for each project.

Tailor-fitting each fixture to the needs of the design is no hurdle for our company.



### TOP VISOR





## LOW WIND RESISTANCE

### Frontal EPA (Wind Surface):

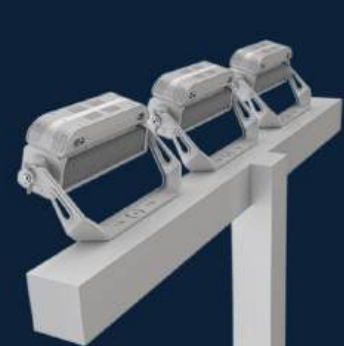
600W: 0.14m<sup>2</sup> (1.51ft<sup>2</sup>)  
1500W: 0.28m<sup>2</sup> (3.10ft<sup>2</sup>)  
1800W: 0.34m<sup>2</sup> (3.68ft<sup>2</sup>)

### Side EPA (Wind Surface):

600W: 0.08m<sup>2</sup> (0.86ft<sup>2</sup>)  
1500W: 0.11m<sup>2</sup> (1.22ft<sup>2</sup>)  
1800W: 0.15m<sup>2</sup> (1.60ft<sup>2</sup>)

# 500W/600W/750W INSTALLATION OPTIONS

Flexible bracket installation options meet customers' needs for many different scenarios.



Yoke Bracket



Knuckle  
Assembly Bracket



Slip Fitter Bracket



# ORDER BY PART NUMBER

Use this table to define your Bryant Series fixture part number

Q	K	CRI	V	Color	Deg	Options
300	40	70	NV-120-277	GR-grey	10	VZ-Visor
400	50	80	HV-277-480	BL-black	15	RD-Remote Driver
500	57	90		WH-white	20	ID-Integrated Driver
600				C-custom	40	YK-Yoke Mount
750					60	KN-Knuckle Mount
1000					80	SF-Slipfit Mount
1200						AGR-Anti-Glare Ring
1500						
1800						

## How it works

Fill in the blanks below using the information from the table above:

Bryant - Q \_\_\_\_\_ - \_\_\_\_\_ K - \_\_\_\_\_ CRI - \_\_\_\_\_ - \_\_\_\_\_ - \_\_\_\_\_ - \_\_\_\_\_

**Part Number Example:** Bryant Series fixture of 1200w, 5000k, 80cri, 480v, white, 40 degrees with a yoke mount, remote driver, and anti-glare ring:

Bryant-Q**1200-50K-80CRI-HV-WH-40-YK-RD-AGR**

Visit us at [gamedaylighting.com](https://www.gamedaylighting.com)

## Lighting for All Sports

### CALL OR TEXT US TODAY

- 913.444.6195
- [sales@gamedaylighting.com](mailto:sales@gamedaylighting.com)



**HEADQUARTERS**

| 2930 Terrace St Kansas City MO 64108

| [gamedaylighting.com](https://www.gamedaylighting.com)